



Navigating Networks

Welcome to "Navigating Network"!
Let's take a journey to understand
different ways devices communicate,
no tech skills required.





What Are Networks?

Digital Bridges

Devices can share info, like friends chatting across town. Networks facilitate this communication and are like digital bridges connecting devices.

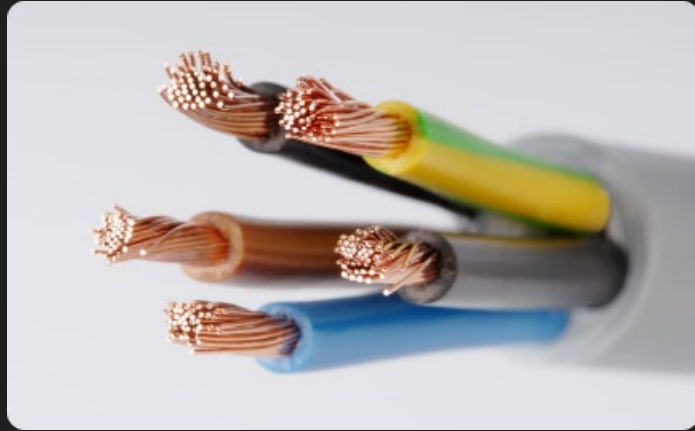
Shared Resources

Networks allow for sharing resources like printers, files, and internet connections.

Collaboration

Users can work together on documents, projects, and other tasks with the power of networks.

Cable Networks



Broadband Connections

Home cable networks are like an express lane on the internet highway, enabling data speeds up to 1 Gbps.



Family Fun

Reliable for streaming, gaming, and browsing, cable networks keep everyone connected to the entertainment they want, when they want it.



Working Remotely

Stable, fast connections allow people who work remotely the ability to seamlessly participate in virtual meetings and conferences.

Cellular Networks



Connect On-The-Go

Cellular networks allow devices to connect on the go, thanks to cell towers that relay data like a team passing a baton.

Kids Safety

Parents can ensure their child's safety by using a cellular network to track their device's location.

Adventures

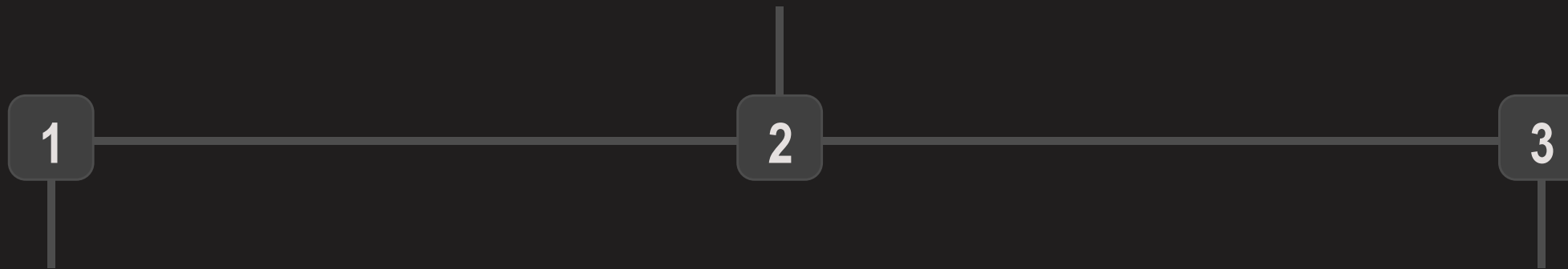
Enjoy hiking or exploring secluded areas without sacrificing connectivity with cellular networks.



WiFi Networks

Speedy Browsing

Perfect for browsing indoors with fast speeds, many pals can be online.



Wireless

WiFi networks connect devices wirelessly no strings attached!

Limitless Connectivity

Connecting devices to a WiFi network can be an easy way to share files and stream media.



Ethernet Networks

1 Wired Connection

An ethernet cable is a direct line to the network, meaning that this option has the least amount of possible interference and the best reliability.

2 Speedy Transfers

A wired ethernet connection is perfect for transferring data quickly and securely - ideal for large files.

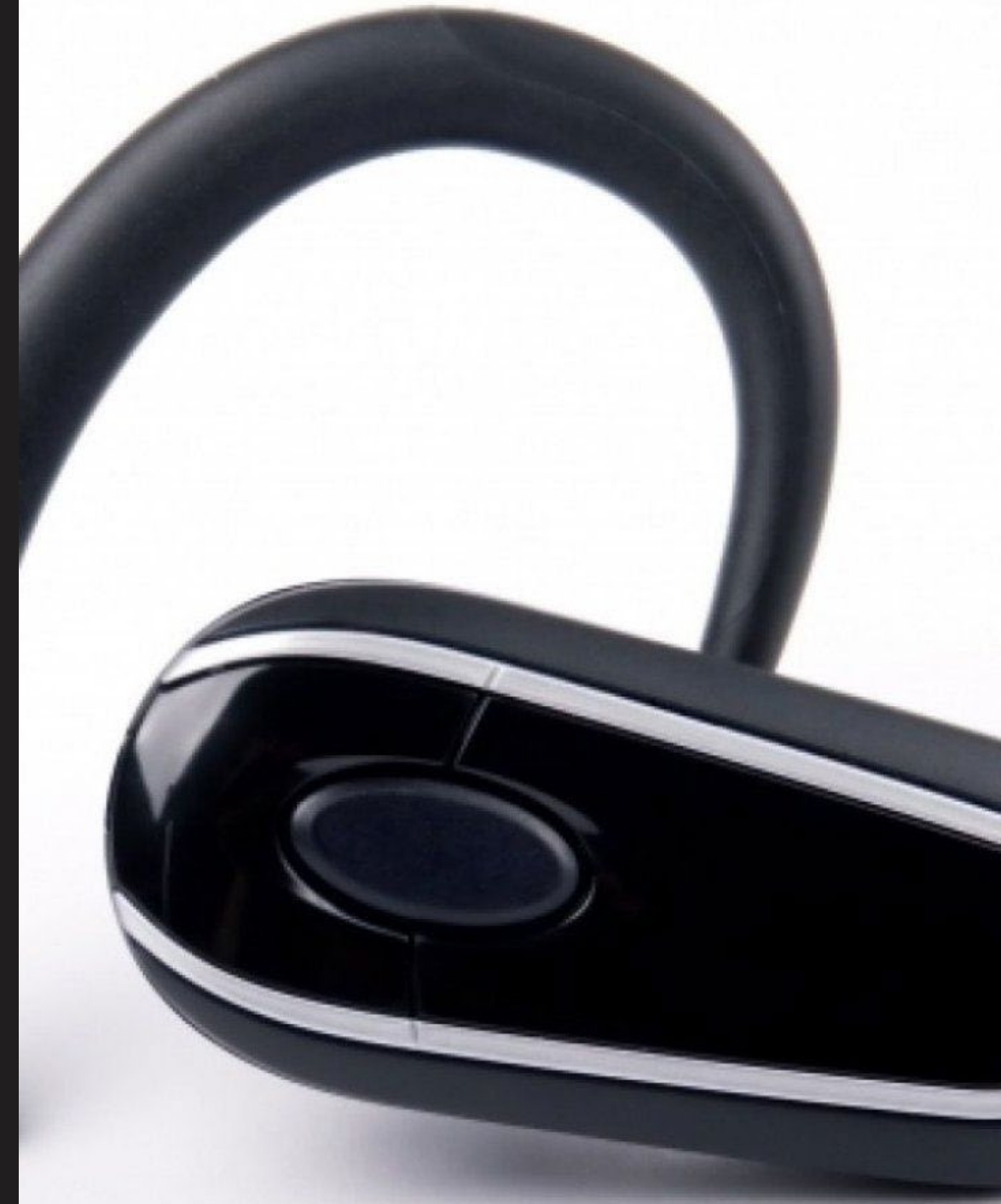
3 Streamlined Interface

Desktop devices with hard-wired ethernet connections will experience near-instant speeds when browsing and downloading.

Bluetooth Networks

Short-Range Magic

Bluetooth Networks allow for wireless device-to-device connections over short distances.





Cellular vs. WiFi vs. Ethernet vs. Bluetooth vs. Cable

	Speed	Coverage	Mobility
Cellular	5G speeds Up to 1 Gbps	Wide-range coverage	Mobile devices only
WiFi	Up to 1 Gbps	Short-range coverage	Less mobile
Ethernet	Up to 1 Gbps	Wired coverage Limit 328 feet	Not mobile
Bluetooth	Up to 2.1 Mbps	Short-range coverage Limit 30 feet	Not mobile
Cable	Up to 1 Gbps	Depends on provider	Not mobile



Choosing Data Plans

Latest Coverage Maps

Before you choose a network, consult coverage maps to ensure optimal service. Consider download speeds and coverage areas when selecting a data plan.

Traveling Made Easy

When traveling, it's essential to have a good data plan. Purchase a local SIM card for affordable coverage. Consider using mobile hotspots to avoid roaming fees.

Smart Data Usage

Keep track of your data usage and limit it as necessary. Avoid unnecessary data usage by keeping your apps and software up-to-date.

Saving Money

Always be on the lookout for deals and promotions. Sign up for auto-pay to get discounts. Consider family plans for better value.



Setting Up WiFi



Quick and Easy

Set up your WiFi router by following the instructions provided. Secure your network with a strong password and WPA encryption. Consider setting up a guest network for visitors.

Optimizing Your Network

Position your router for maximum performance. Reduce interference by keeping it away from other devices. Upgrade your router if necessary to improve speed and performance.

Exploring Mesh WiFi

Mesh WiFi uses multiple routers to eliminate dead spots and improve coverage. Consider using mesh WiFi for larger homes or small businesses.

Pairing Devices with Bluetooth



How It Works

- Use Bluetooth to connect your devices, such as headphones, speakers, and keyboards, to your computer or mobile device. Make sure they are within range and pairing is enabled on both devices.

Benefits

- Convenience: no wires or cables
- Compatibility: most devices have Bluetooth
- Energy Efficient: consumes low power

Possible Issues

- Interference: may be interference from other devices
- Compatibility: not all devices support Bluetooth
- Security: make sure your device is not discoverable if you don't want strangers connecting to it



Recap

We've explored the evolution of networks and discovered how to choose the right data plan, set up WiFi, and stay connected while traveling. Ethernet and Bluetooth only add convenience to the mix, while broadband networks offer entertainment and security solutions. Remember to consult coverage maps, choose passwords wisely and don't hesitate to ask for help.

Stay connected!